

INTERNATIONAL TOURISM SNAPSHOT

as at 31 December 2015

Total international arrivals to Australia



+8%

2015

7.4 million



2014

6.9 million

Total international visitor spend



+18%

2015

\$36.6 billion



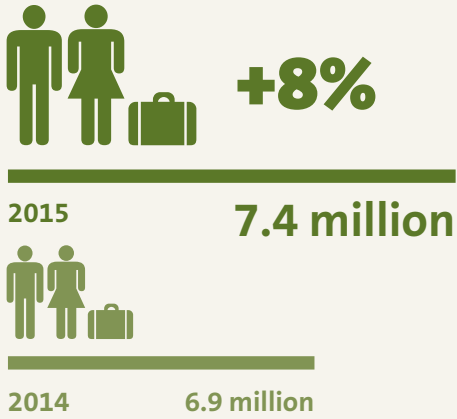
2014

\$31.1 billion

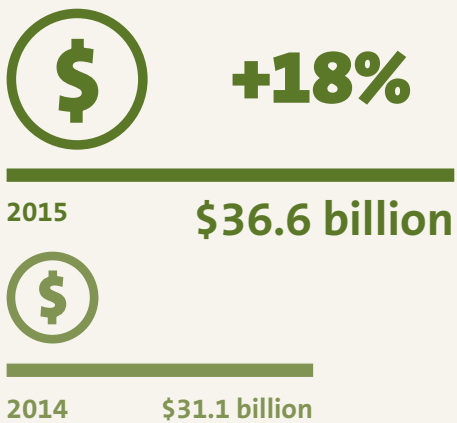
International Tourism Snapshot as at 31 December 2015

International arrivals and spending are both at record levels. We welcomed 7.4 million international visitors in 2015. These visitors injected more than \$36 billion into the Australian economy. Total international aviation capacity to Australia grew marginally by 1 per cent.

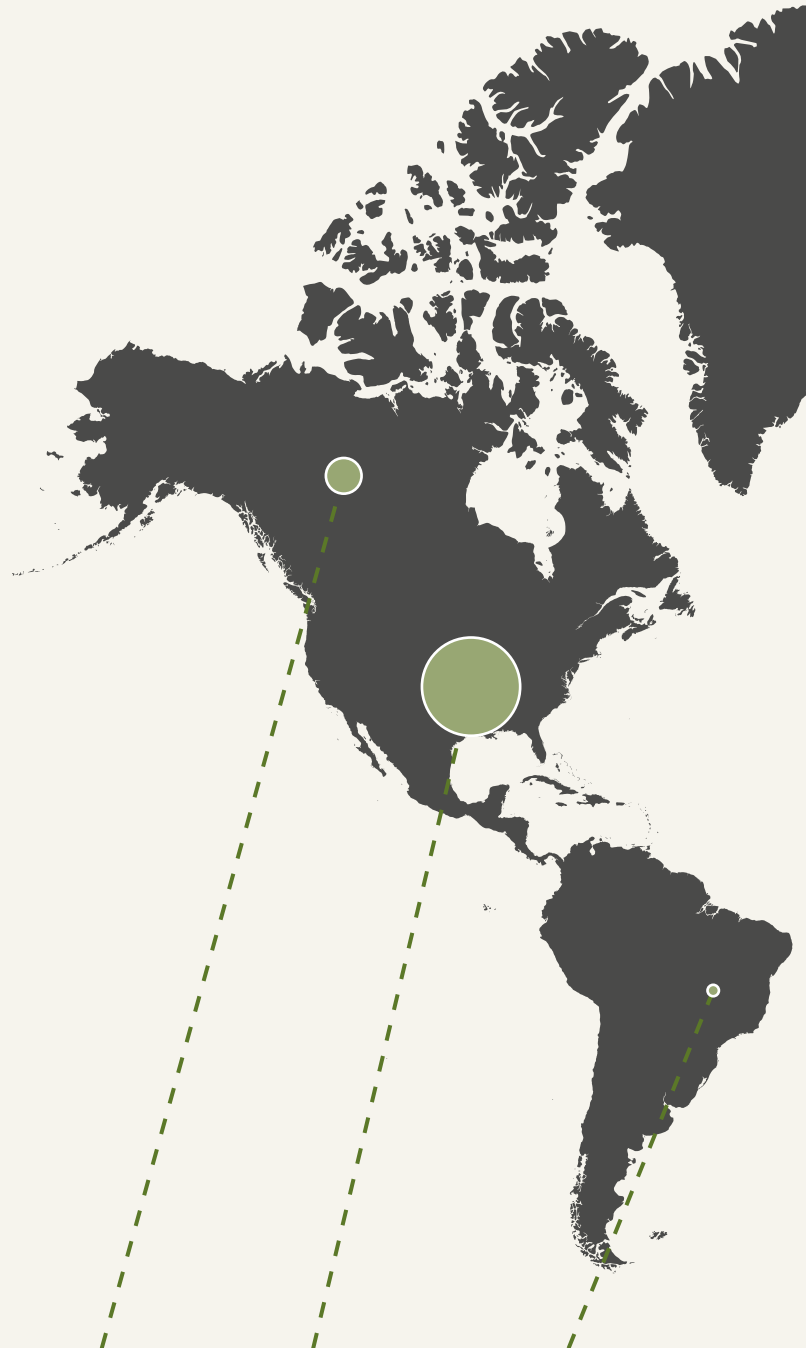
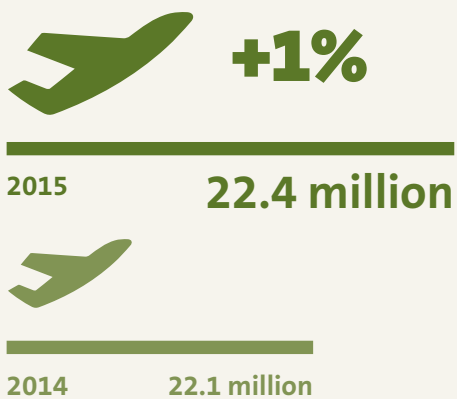
Total international arrivals to Australia



Total international visitor spend



Total international aviation capacity* (inbound seats)



CANADA

141,900
+3%

\$0.8bn
+5%

7fpw
+11%**

USA

609,900
+10%

\$3.4bn
+22%

104fpw
+11%

BRAZIL

45,100
+2%

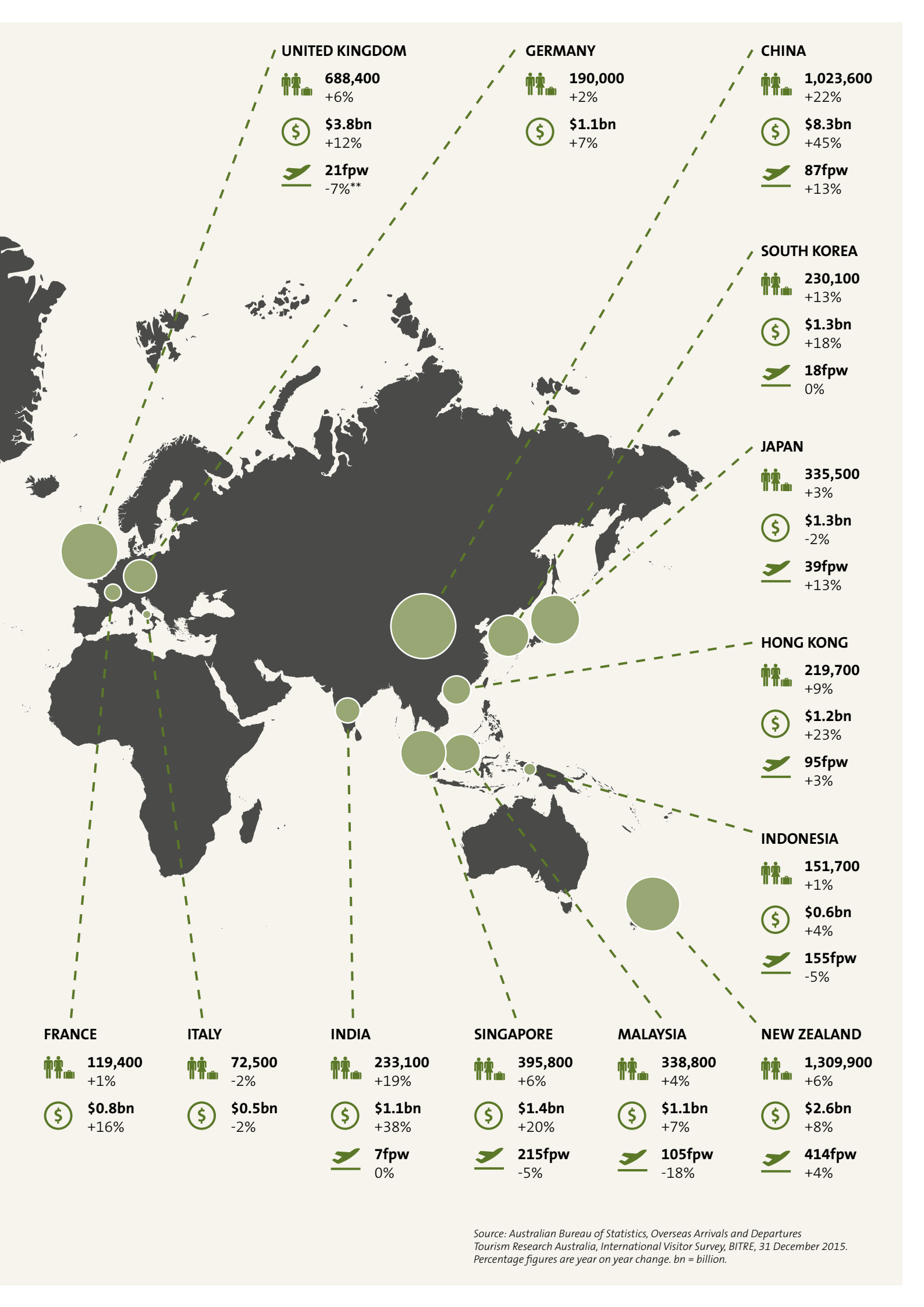
\$0.4bn
+4%

Size of circle represents relative size of visitor spend in Australia as at YE December-15

* Aviation data are for international scheduled direct flights to Australia with "same flight number" originating from respective source markets.

** Year on year change of number of seats.

fpw = flights per week (inbound).



UNITED KINGDOM

688,400
+6%

\$3.8bn
+12%

21fpw
-7%**

GERMANY

190,000
+2%

\$1.1bn
+7%

CHINA

1,023,600
+22%

\$8.3bn
+45%

87fpw
+13%

SOUTH KOREA

230,100
+13%

\$1.3bn
+18%

18fpw
0%

JAPAN

335,500
+3%

\$1.3bn
-2%

39fpw
+13%

HONG KONG

219,700
+9%

\$1.2bn
+23%

95fpw
+3%

INDONESIA

151,700
+1%

\$0.6bn
+4%

155fpw
-5%

FRANCE

119,400
+1%

\$0.8bn
+16%

ITALY

72,500
-2%

\$0.5bn
-2%

INDIA

233,100
+19%

\$1.1bn
+38%

7fpw
0%

SINGAPORE

395,800
+6%

\$1.4bn
+20%

215fpw
-5%

MALAYSIA

338,800
+4%

\$1.1bn
+7%

105fpw
-18%

NEW ZEALAND

1,309,900
+6%

\$2.6bn
+8%

414fpw
+4%

Source: Australian Bureau of Statistics, Overseas Arrivals and Departures
Tourism Research Australia, International Visitor Survey, BITRE, 31 December 2015.
Percentage figures are year on year change. bn = billion.



Tourism Australia
Level 29, 420 George St
Sydney NSW 2000 Australia
+61 2 9360 1111

Corporate: tourism.australia.com | twitter.com/TourismAus

Consumer: australia.com | twitter.com/Australia | facebook.com/SeeAustralia